

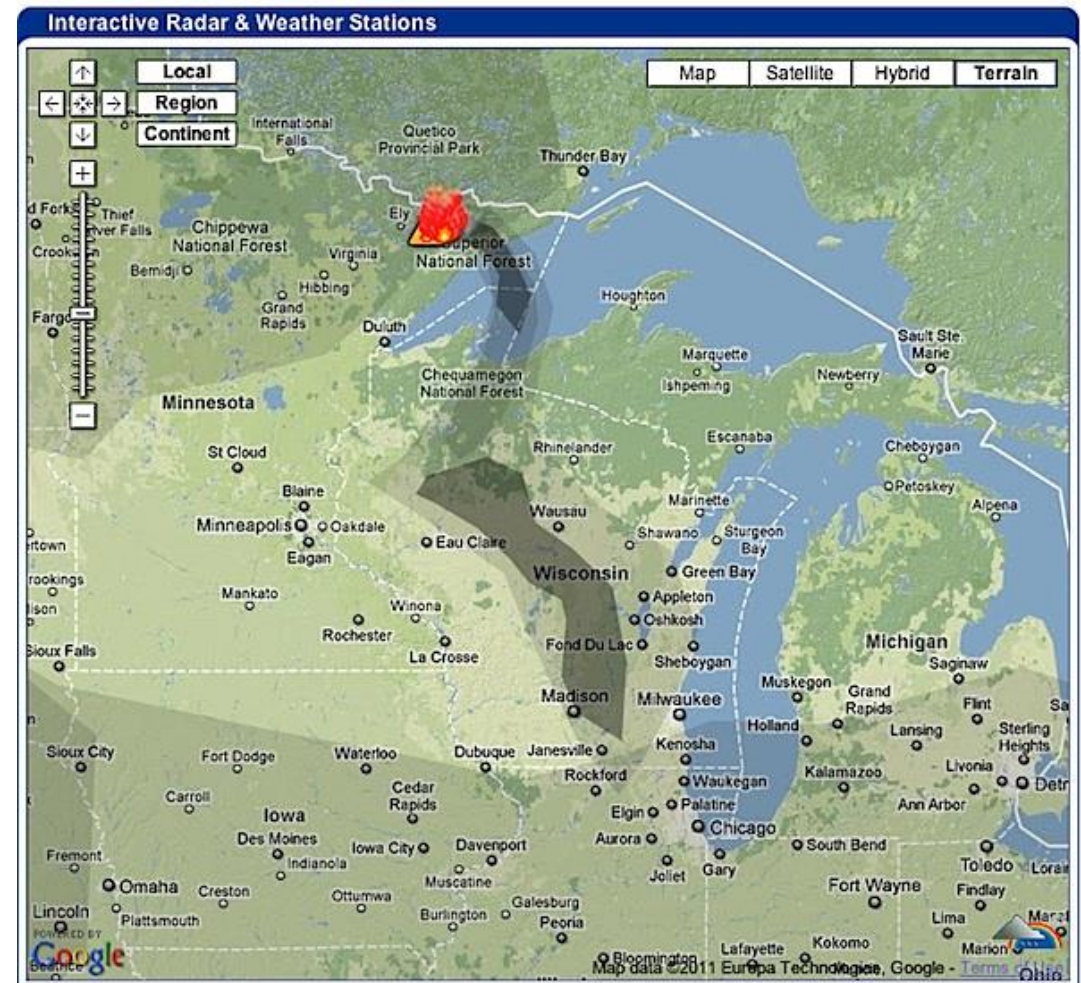
# Pagami Creek Wildfire

Emily Kreiter

FNRM 3262

# Background

- 13 mi east of Ely, MN
- Lightning strike in conjunction with perfect conditions for a wildfire
- Widespread impact

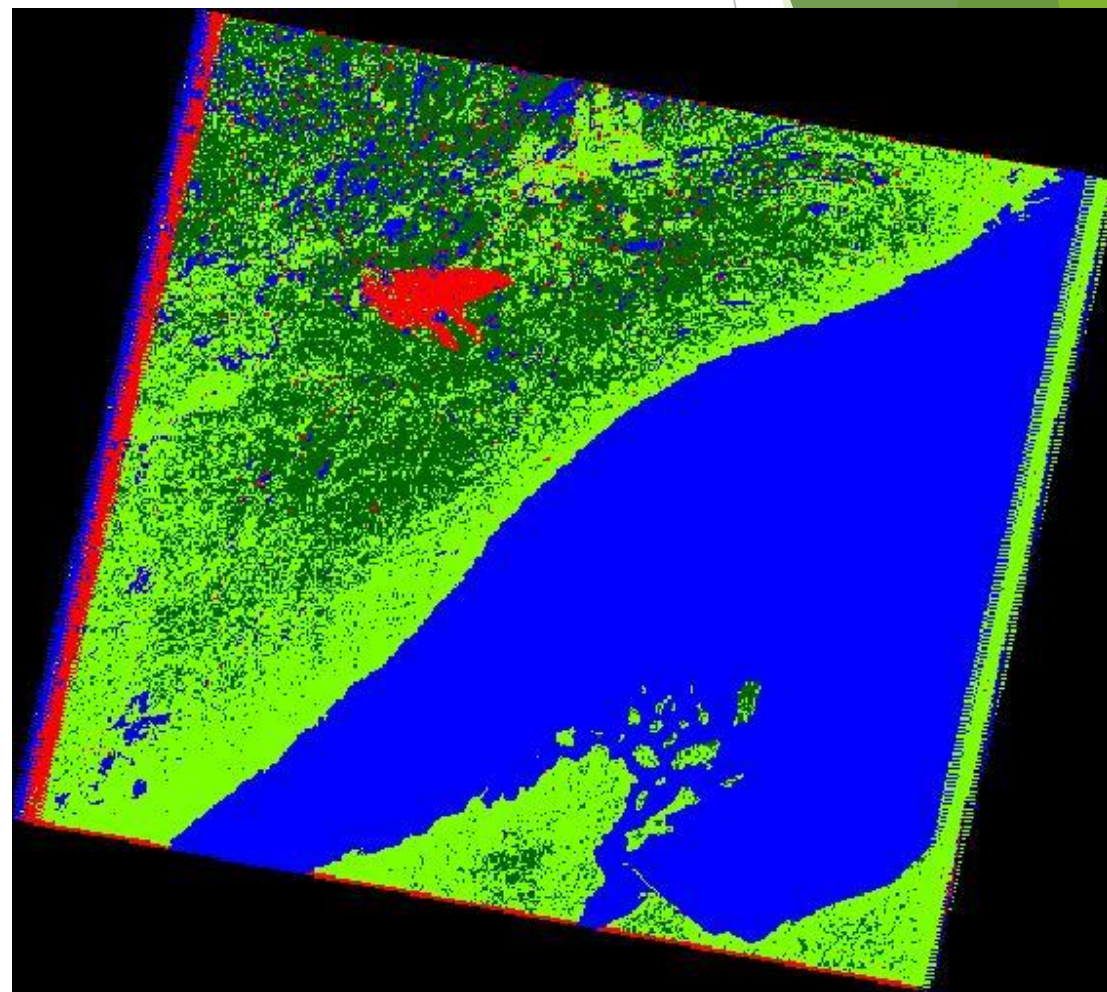
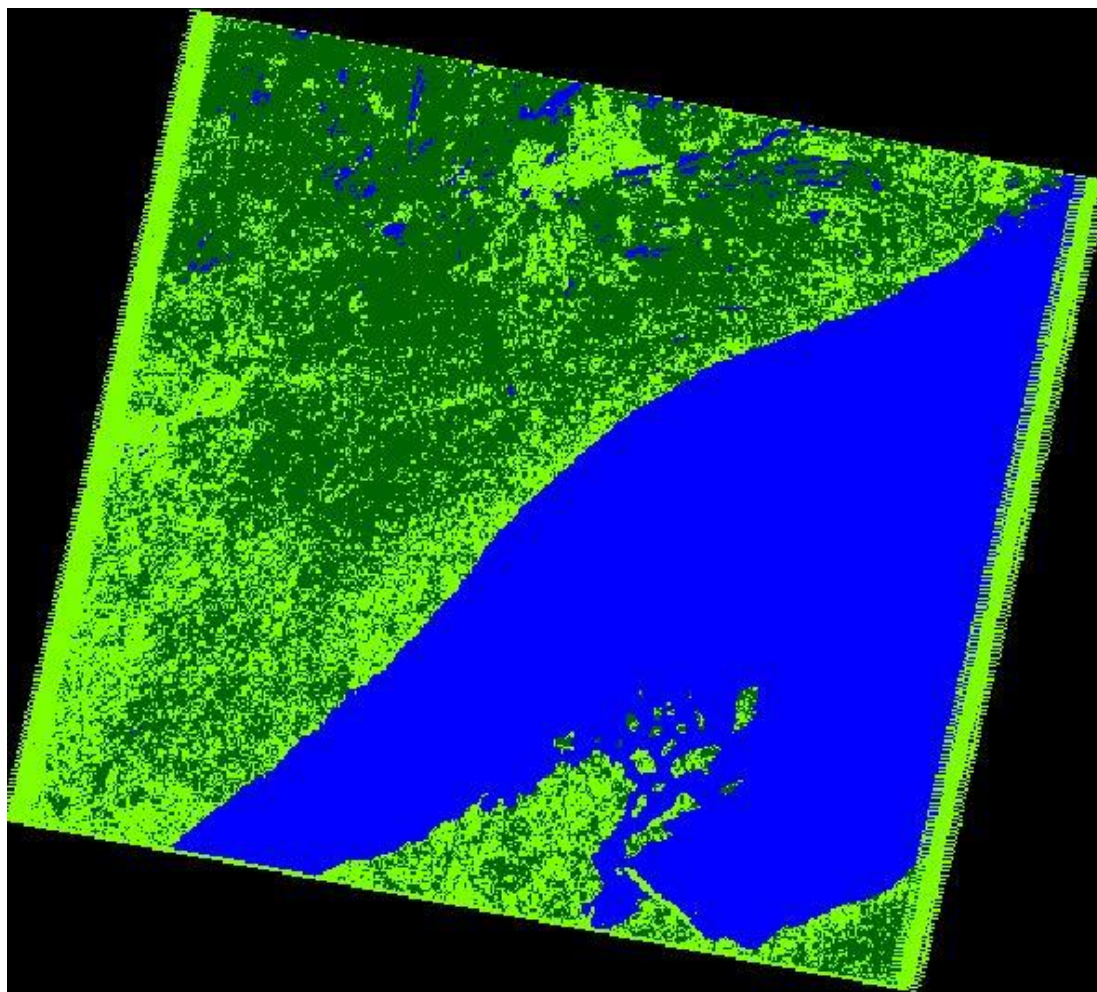


# Methods

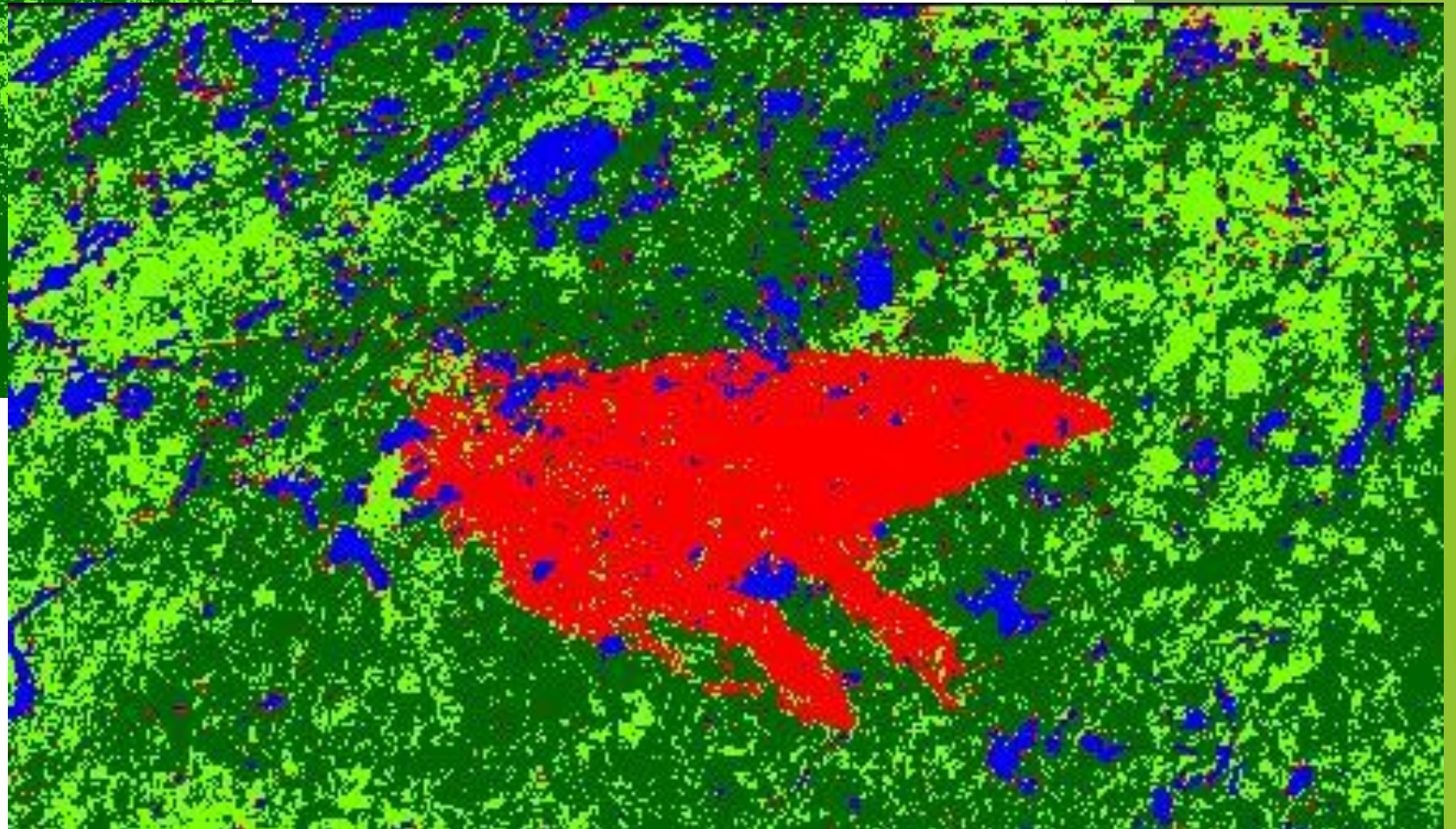
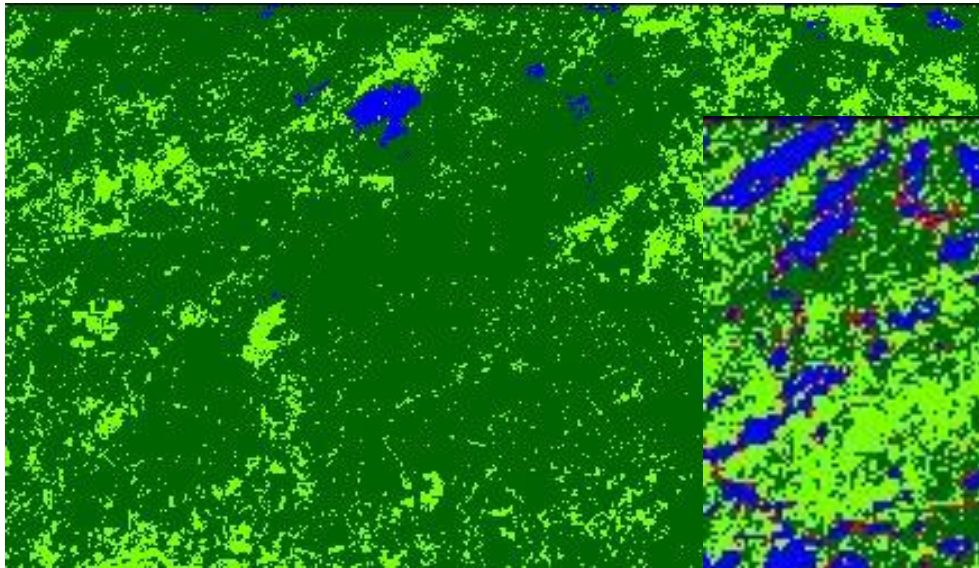
- ▶ Landsat 4 - before and after
- ▶ Supervised classification
- ▶ Change detection



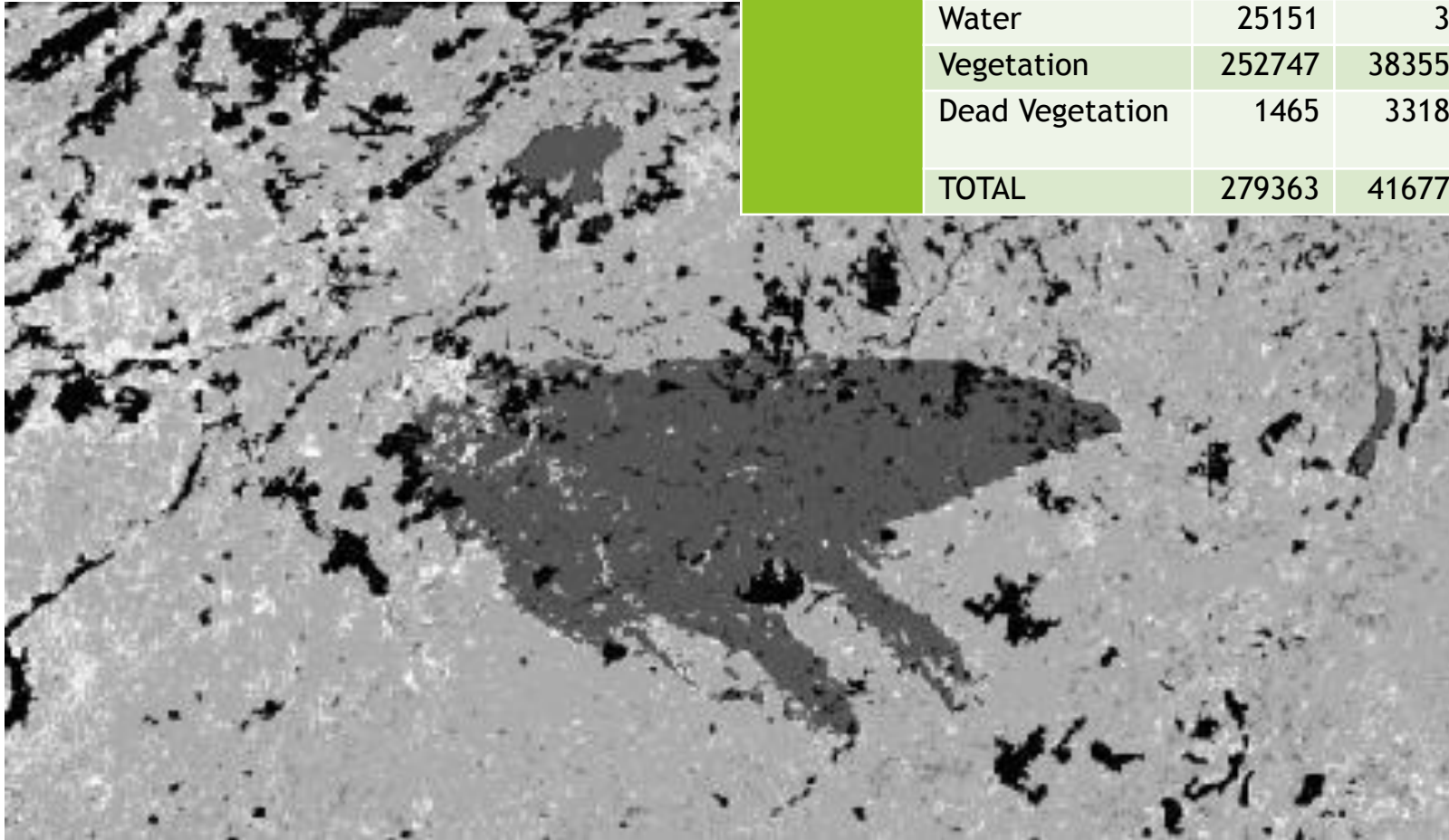
# Results



# Results (cont'd)



# Results (cont'd)



		To				
From		Water	Burn	Vegetation	Dead Veg	TOTAL
	Water	25151	34	0	0	25185
	Vegetation	252747	383555	5.93E+10	271291	59256907593
	Dead Vegetation	1465	33189	50870	426043	511567
	TOTAL	279363	416778	59256050870	697334	59257444345

# Discussion

- ▶ 37,510 hectares to burn
- ▶ Environmental impacts
- ▶ Remote sensing technologies to detect and monitor wildfire